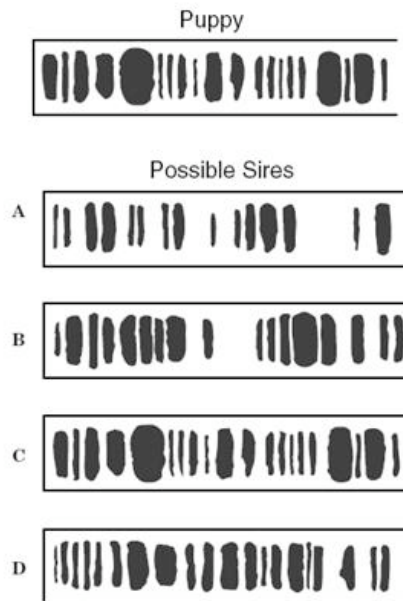


DNA Fingerprinting / worksheet

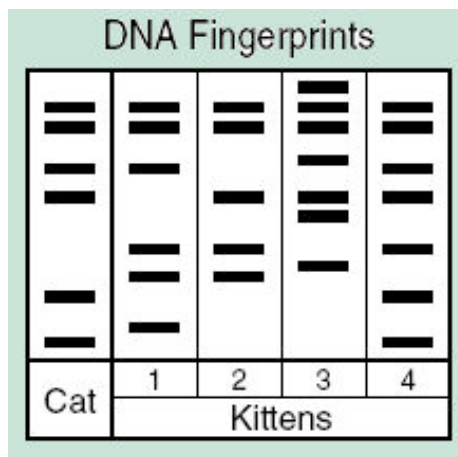
1. The DNA fingerprints were made from blood samples taken from a puppy and four possible sires of this puppy in an effort to determine the puppy's pedigree. According to this information, which sire was probably the father of this puppy? CIRCLE YOUR ANSWER

- a. A
b. B
c. C
d. D

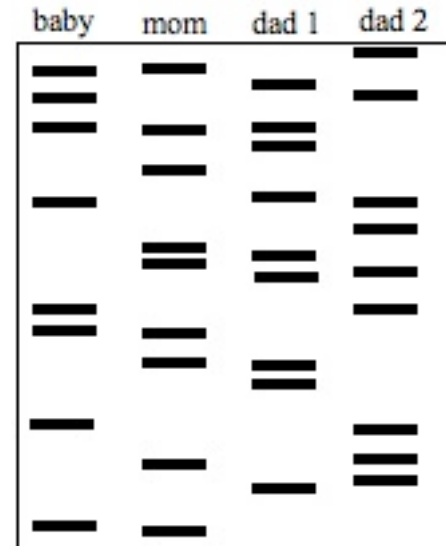


2. The picture shows a segment of DNA from a cat. Which of these is most likely the kitten of this cat? CIRCLE YOUR ANSWER.

- a. 1
b. 2
c. 3
d. 4



3. Mrs. Smith has a baby named Tyra. She believes one of two men can be the father of her child. A paternity test is done and the results are shown above. Which of the 2 men are baby Tyra's father? _____



4. Lt. Russ is investigating a murder scene. The felon was scratched by his victim & some of his skin cells were found under the victim's fingernails. A DNA test was performed. Which of the suspects is the murderer? _____

